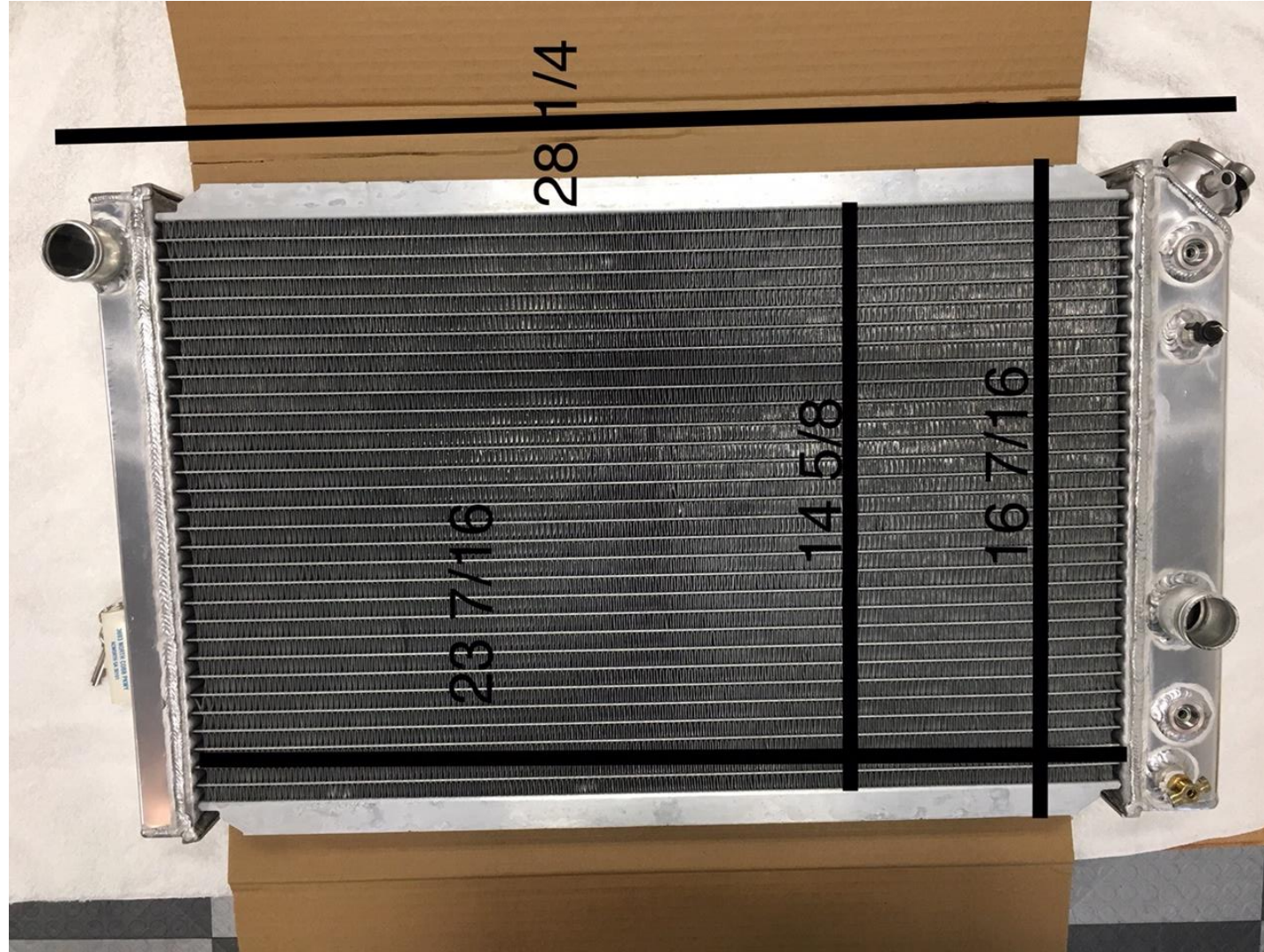


RADIATOR EXPRESS
P/N 221987
82-92 CHEV S-10/GMC S-15
V8 CONVERSION
FACTORY SHROUD
MODIFICATION AND
INSTALLATION

THIS IS SPECIFIC FOR 87-89. OTHERS SHOULD WORK BUT MAY REQUIRE LITTLE CHANGES



RADIATOR EXPRESS P/N 221987 DIMENSIONS



FACTORY S-10/S-15 RADIATOR SHROUD OVERLAY

UPPER SHROUD



USING A FACTORY FAN SHROUD
FOR
84-93 S-10

CUT ALONG SHOWN OUTLINES
AND DISCARD THE INTERIOR
SECTIONS

UPPER SHROUD

RETAIN

1 1/2"

1 1/2"

AFTER THE PREVIOUS REMOVAL
HAS BEEN ACCOMPLISHED

CUT ALONG SHOWN OUTLINES
(APPROXIMATELY 1 1/2" FROM THE
FACTORY SADDLE LOCATION

RETAIN THE MIDDLE SHROUD
SECTION

UPPER



LOWER SHROUD



USING A FACTORY FAN SHROUD
FOR
84-93 S-10

CUT ALONG SHOWN OUTLINES
AND DISCARD THE INTERIOR
SECTIONS

LOWER SHROUD



AFTER THE PREVIOUS REMOVAL
HAS BEEN ACCOMPLISHED

CUT ALONG SHOWN OUTLINES
(APPROXIMATELY 1 1/2" FROM THE
FACTORY SADDLE LOCATION

RETAIN THE MIDDLE SHROUD
SECTION

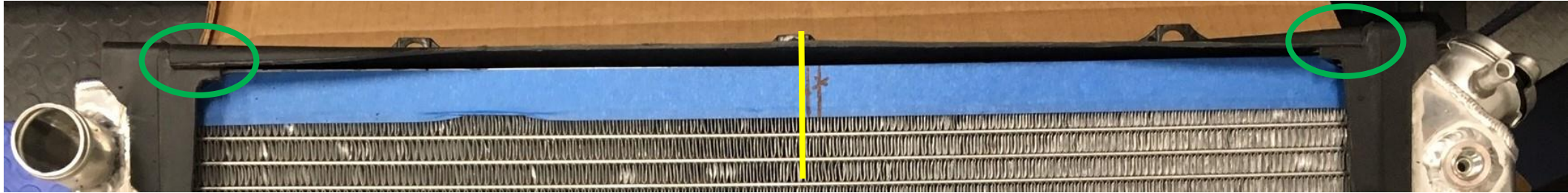


SEAT BOTH UPPER AND LOWER TRIMMED SHROUD PIECES INTO APPROPRIATE SADDLE LOCATIONS (MUST HAVE FACTORY SADDLE PADS)

CONNECT BOTH UPPER AND LOWER SECTIONS ON EACH SIDE WITH U-NUT AND 10mm FASTENER

NOTE: SOME TRIMMING MAY BE REQUIRED AROUND INLETS AND DRAIN COCK

UPPER RADIATOR MOUNT



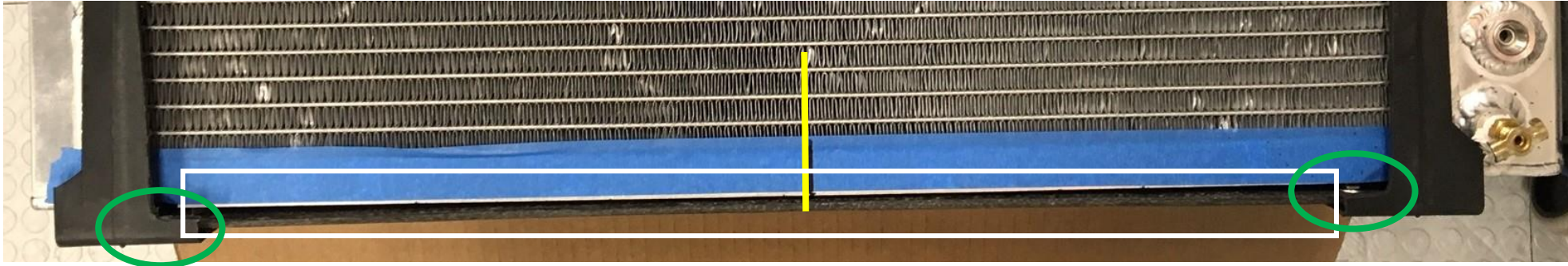
MEASURE TO FIND THE CENTER OF THE RADIATOR (YOU MAY PREFER TO OFFSET THE RADIATOR AT THIS IF NEEDED)

ALIGN THE CENTER MOUNTING HOLE LOCATION OF THE SHROUD PIECE TO THE CENTER OF THE RADIATOR

AT EACH END, MARK THE LOCATION TO TRIM THE EXCESS CENTER SECTION. THIS PIECE SHOULD ALIGN WITH THE RADIATOR SADDLE LOCATIONS

THERE IS A MOULDED RIB ON THE UNDER SIDE OF THE MIDDLE SECTION THAT WILL NEED TO BE TRIMMED SMOOTH OVER THE OVERLAP AREAS IN ORDER TO ACHIEVE A FULL SEATED CONDITION

LOWER RADIATOR MOUNT



YOU WILL NEED TO MANUFACTURE A STRAP THAT CONNECTS BOTH LEFT AND RIGHT SHROUD SIDE PIECES AT THE BOTTOM. THE STRAP (ANNOTATED BY THE WHITE BOX) WILL NEED TO BE APPROXIMATELY 2" WIDE AND THE LENGTH IS DETERMINED BY THE MEASUREMENT BETWEEN THE SADDLE HUMPS (GREEN CIRCLES)

MINE IS MADE FROM A COMPOSITE STRAP I FABRICATED BUT A PIECE OF .090 ALUMINUM WILL WORK

AT EACH END, MARK THE LOCATION TO TRIM THE EXCESS CENTER STRAP. THIS PIECE SHOULD ALIGN WITH THE RADIATOR SADDLE LOCATIONS ON THE INSIDE OF THE SHROUD SIDE PIECES

THERE IS A MOULDED RIB ON THE INSIDE OF THE SHROUD SIDE PIECES THAT WILL NEED TO BE TRIMMED SMOOTH OVER THE OVERLAP AREAS IN ORDER TO ACHIEVE A FULL SEATED CONDITION



YOU SHOULD NOW HAVE SOMETHING THAT RESEMBLES THE PHOTO SHOWN

UPPER: AT THE OVERLAP LOCATIONS, DRILL 2 $\frac{1}{4}$ " HOLES THROUGH BOTH THE UPPER CENTER SECTION AND SHROUD SIDE SECTIONS AND FASTEN WITH 2 $\frac{1}{4}$ "-20 FASTENERS (ONE FORWARD AND ONE AFT AT EACH INTERFACE LOCATION)

LOWER: AT THE OVERLAP LOCATIONS, DRILL 2 $\frac{1}{4}$ " HOLES THROUGH BOTH THE LOWER STRAP AND SHROUD SIDE SECTIONS AND FASTEN WITH 2 $\frac{1}{4}$ "-20 FASTENERS (ONE FORWARD AND ONE AFT AT EACH INTERFACE LOCATION)

TEMPORARILY INSTALL RADIATOR INTO RADIATOR SUPPORT AND INSTALL THE THREE FASTENERS THAT ATTACH THE RADIATOR TO THE SUPPORT.

ALIGN THE FASTENER LOCATIONS OF THE REMOVED LOWER CENTER SECTION OF THE RADIATOR SHROUD WITH THE APPROPRIATE HOLES IN THE LOWER SECTION OF THE RADIATOR CORE SUPPORT.

THERE IS A MOULDED RIB ON THE INSIDE OF THE LOWER SHROUD PIECE THAT WILL NEED TO BE TRIMMED SMOOTH IN ORDER TO ACHIEVE A FULL SEATED CONDITION

MARK THE LOCATIONS WHERE THE LOWER CENTER SECTION WILL NEED TO BE TRIMMED (I TRIMMED TO FIT IN THE OPENING WITH NO OVERLAP AS IT WILL FASTENED DIRECTLY TO THE STRAP)

MAKE ALIGNMENT MARKS TO REFERENCE WHERE TO INSTALL FASTENERS ONCE THE RADIATOR UNIT IS REMOVED

REMOVE THE TEMPORARILY INSTALLED RADIATOR

ALIGN THE LOWER SECTION OF THE RADIATOR SHROUD WITH ALIGNMENTS MARKS MADE IN THE PREVIOUS STEPS.

MARK AND DRILL HOLES AT DESIRE LOCATIONS AND INSTALL ¼"-20 FASTENERS TO ATTACH LOWER SHROUD SECTION TO THE STRAP

NOW YOU CAN DO THE FINAL INSTALL INTO THE VEHICLE

AS FOR HOSES, HAVE FUN AND MAKE FRIENDS WITH A PARTS STORE GUY!! ONE THING, THE STOCK LOWER HOSE WILL NOT WORK!!! MOST LIKELY YOU WILL HAVE TO DO A 2 PIECE IN ORDER TO MAKE THE CONNECTION

